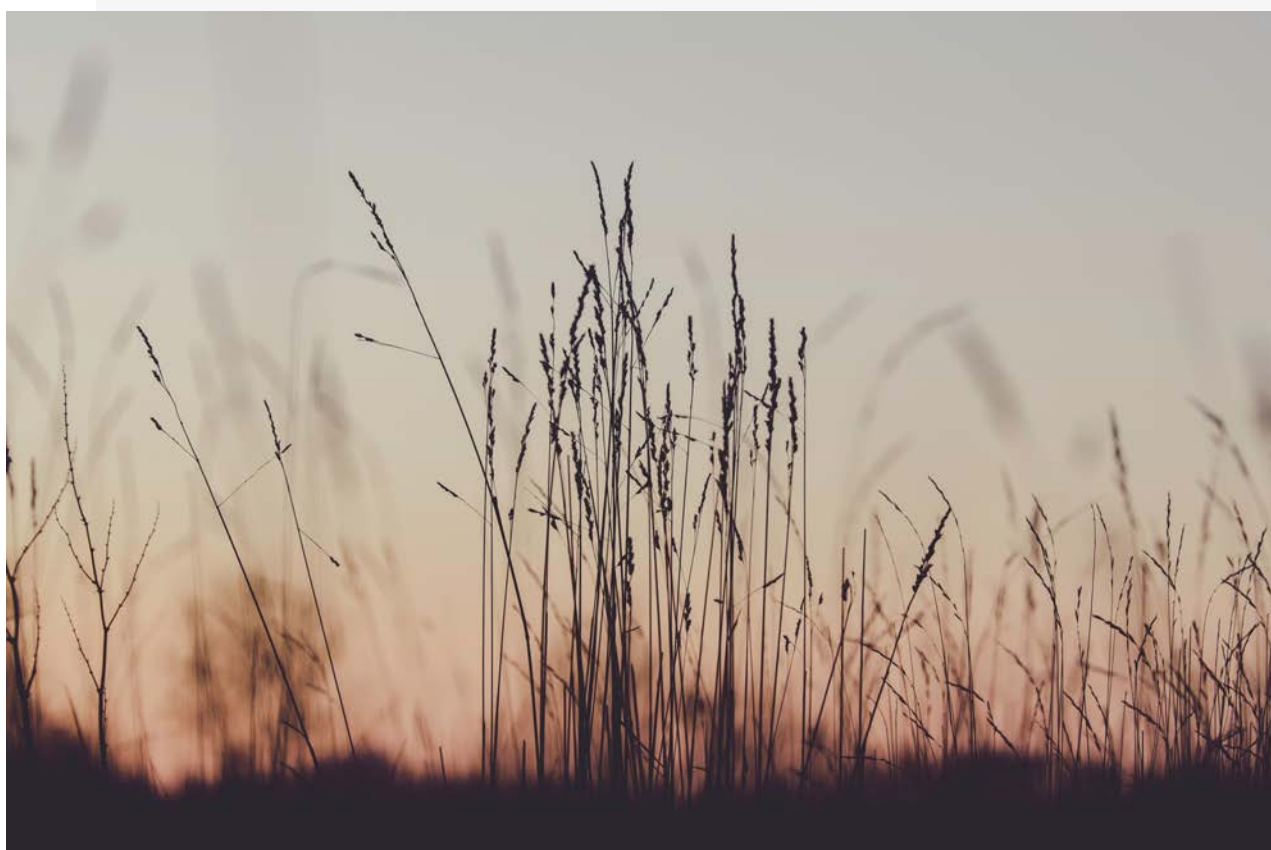


JANE SLEIGHT-LEACH

2020 EVENTS

# WORKSHOPS RETREATS & SPEAKER FEES



**PREPARED AND PRESENTED BY**

JANE SLEIGHT-LEACH  
COMMENCING JANUARY 2020



# AVAILABLE EVENTS

CHOOSE THE BEST OPTION FOR YOUR GROUP TO LEARN AND INTEGRATE CUTTING EDGE TECHNIQUES AND STRATEGIES FOR WELL-BEING

	DURATION	AVAILABLE FROM
<b>1 DAY WORKSHOP</b>	9.30 AM - 4.30 PM	JANUARY 2020
<b>10 WEEK WORKSHOP SERIES</b>	2 HOURS PER WEEK	JANUARY 2020
<b>3 DAY RETREAT</b>	8.30 AM FRIDAY,- 5.30 PM SUNDAY	MARCH - NOVEMBER 2020



# EVENT FEES

## YOUR CHOICE OF FORMAT

## BASIC PRICING

### ONE DAY WORKSHOP

UP TO 10 PARTICIPANTS

\$ 1500.00 + CATERING

### 10 WEEK WORKSHOP SERIES

UP TO 10 PARTICIPANTS

\$5000 + VENUE

### 3 DAY RETREAT

6 - 8 PARTICIPANTS

\$ 3000.00 PER PERSON  
ALL INCLUSIVE

PERSONAL SESSIONS CAN BE ADDED TO DEEPEN THE EXPERIENCE OF EACH PARTICIPANT



# SPEAKING & PRESENTATION FEES

## YOUR CHOICE OF FORMAT

## BASIC PRICING

### KEYNOTE

PLUS TRAVEL & ACCOMMODATION OUTSIDE SE QLD

\$ 2000

### STANDARD PRESENTATION

PLUS TRAVEL & ACCOMMODATION OUTSIDE SE QLD

\$ 1500

### SHORT PRESENTATIONS

AVAILABLE ON REQUEST.

PLEASE CONTACT TO  
DISCUSS YOUR NEEDS

CONTACT JANE FOR FURTHER INFORMATION ON PRICING AND SUBJECT OPTIONS



# PARTNERSHIPS & COLLABORATIONS

FLEXIBILITY & CHOICE

TAILORED PROGRAMS & EVENTS

Please connect with me to discuss how we might partner or collaborate for a specific idea or program you have in mind. Any combination of the events and personal sessions I have outlined here can be tailored to suit your business, audience, group or program. The information here is intended as a guide to the possibilities that this unique work offers and can be applied to a diverse range of areas of need. Millions of women all over the world, in many environments and from many backgrounds suffer every day from the effects of past trauma. We aim to offer flexible solutions that women actually need, not simply what a service provider assumes they need.

CONTACT JANE FOR FURTHER INFORMATION ON CREATING A TAILORED PROGRAM



# CONTACT

---

**EMAIL:**  
**[JANE@LIFE2PROJECT.COM.AU](mailto:JANE@LIFE2PROJECT.COM.AU)**

---

**PHONE:**  
**0412 200 515**

---

**WEBSITE:**  
**[WWW.JANESLEIGHT-LEACH.COM.AU](http://WWW.JANESLEIGHT-LEACH.COM.AU)**  
**[WWW.LIFE2PROJECT.COM.AU](http://WWW.LIFE2PROJECT.COM.AU)**

---